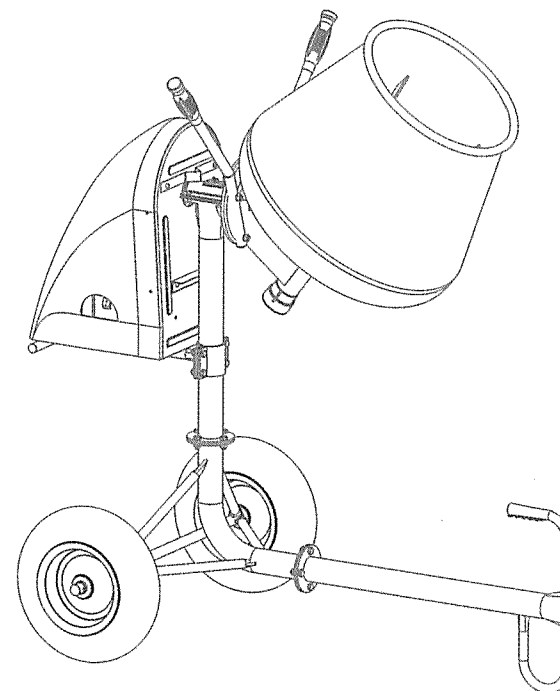


## PARTS LIST

Serial No.	Description	Quantity
1	drive bar	1
2	frame tube	2
3	M10 self-lock nut	4
4	ø10 flat washer	4
5	ø25 tube cap	2
6	ø5*40 split pin	2
7	ø25 flat washer	2
8	400-8 inflatable wheels	2
9	M10*30 bolt	4
10	wheel stand assembly	1
11	motor stand assembly	1
12	M8 self-lock nut	4
13	ø8 flat washer	8
14	ø19 nut	2
15	M8*20 bolt	4
16	motor	1
18	motor cover	1
19	drive pulley	1
20	M6*20 bolt	4
21	velt	1
22	pulley	1
23	fixed plate	1
24	circlip	1
25	back plate	1

Serial No.	Description	Quantity
26	shaft cover/upper	1
27	rubber cap	1
28	handle	2
29	M10 self-lock nut	2
30	ø10 flat washer	4
31	drum support assembly	4
32	M10*40 bolt	1
33	6004 bearing	4
34	umbrella gear	2
35	ring gear	1
36	drum	1
37	M10*20 bolt	6
38	M8*50 bolt 8.8 grade	1
39	shaft	1
40	M8 self-lock nut	1
41	drive shaft	1
42	6205 bearing	1
43	circlip	1
44	5*40 split pin	1
45	6205 bearing	1
46	ø60 rubber cap	1
47	M6 self-lock nut	4
48	ø6 flat washer	8
49	motor fixed cover	1



### FOR YOUR SAFETY

READ AND UNDERSTAND THE ENTIRE MANUAL  
BEFORE OPERATING MACHINE

MODEL NUMBER: \_\_\_\_\_

SERIAL NUMBER: \_\_\_\_\_

Both model number and serial number may be found on the main label.  
You should record both of them in a safe place for future use.

Save This Manual for Future Reference

## SAFETY WARNINGS & CAUTIONS

### ● UNDERSTAND YOUR MIXER

Read and understand the owner's manual and labels affixed to the mixer. Learn its application and limitations as well as the specific potential hazards peculiar to it.

### ● DRUGS, ALCOHOL AND MEDICATION

Do not operate the mixer while under the influence of drugs, alcohol, or any medication that could affect your ability to use it properly.

### ● AVOID DANGEROUS CONDITIONS

Keep your work area clean and well lighted. Cluttered areas invite injuries. Do not use the mixer in wet or damp areas or expose it to rain. Do not use it in areas where fumes from paint, solvents or flammable liquids pose a potential hazard.

### ● INSPECT YOUR MIXER

Check your mixer before turning it on. Keep guards in place and in working order. Form a habit of checking to see that keys and adjusting wrenches are removed from tool area before turning on. Replace damaged, missing or failed parts before using it.

### ● DRESS PROPERLY

Do not wear loose clothing, gloves, nickties or jewelry (rings, wrist watches). They can be caught in moving parts. Protective electrically non-conductive gloves and non-skid footwear are recommended when working. Wear protective hair covering to contain long hair, preventing it from getting caught in machinery.

### ● PROTECT YOUR EYES AND FACE

Any mixer may throw foreign objects into the eyes. This can cause permanent eye damage. Always wear safety goggles and/or face shields. Everyday eyeglasses have only impact resistant lenses. They are not safety glasses.

### ● EXTENSION CORDS

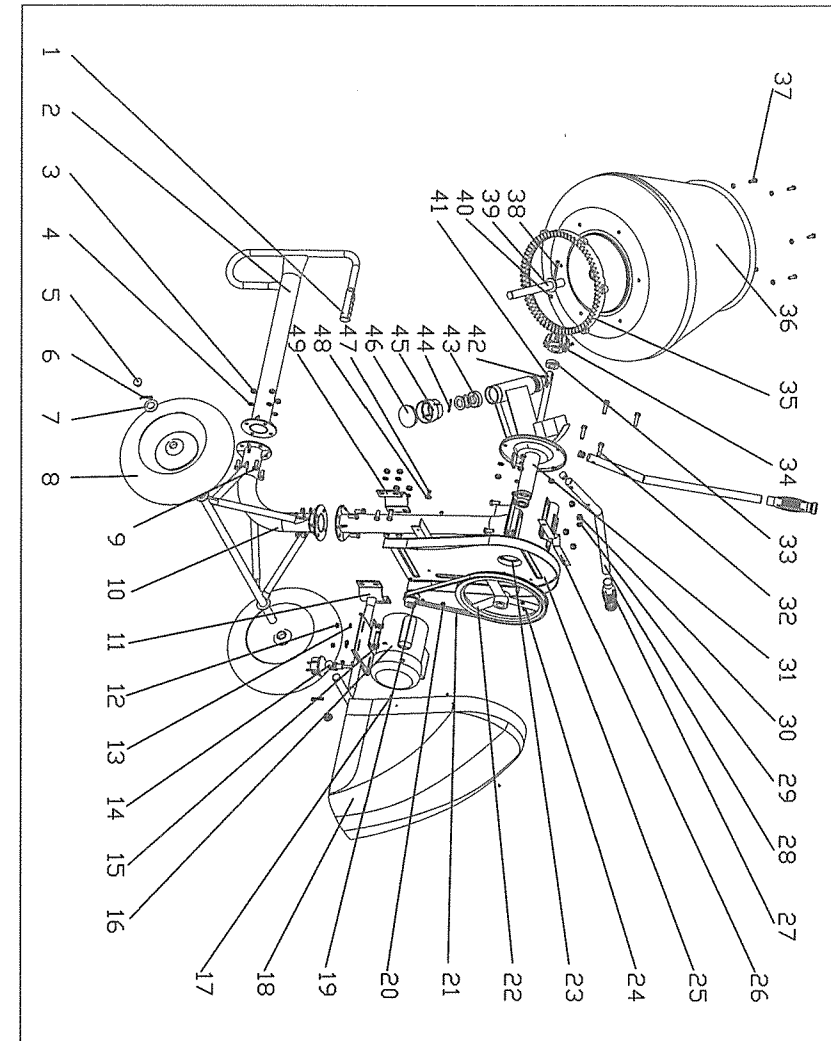
Improper use of extension cords may cause inefficient operation of the mixer which can result in overheating. Be sure the section of extension cord is enough to allow sufficient current flow to the motor. Avoid use of free and inadequately insulated connections. Connections must be made with protected material suitable for outdoor use.

### ● AVOID ELECTRICAL SHOCK

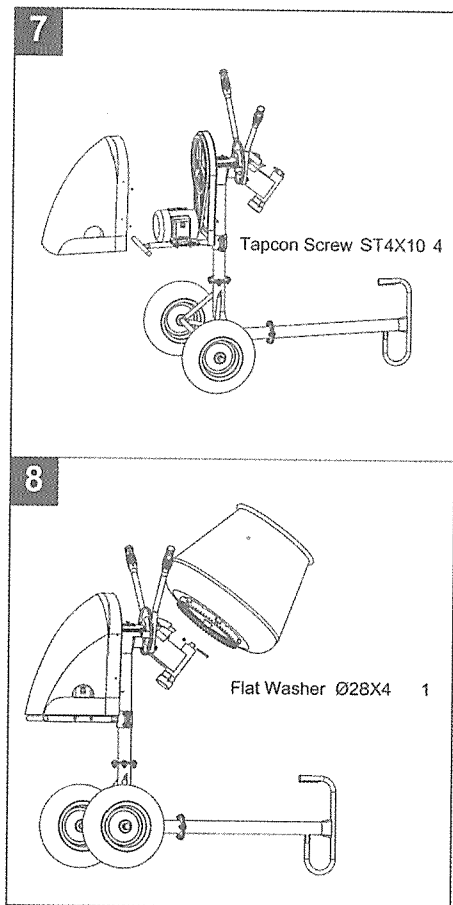
Check that the electric circuit is adequately protected and that it corresponds with the power, voltage and frequency of the motor. Check that there is a ground connection, and a regulation differential switch upstream. Ground the mixer. Prevent body contact with grounded surfaces: pipes, radiators, ranges, and refrigerator enclosures. Make sure your fingers do not touch the plug's metal prongs when plugging or unplugging the mixer.

### ● DON'T FORCE TOOL

The mixer is not to be towed by any vehicle. It will do a better and safer job at its design rate. Don't use the mixer for a purpose for which was not intended.



PARTS SCHEMATIC



**● AVOID INJURY FROM UNEXPECTED ACCIDENT**

Do not attempt to load or unload the materials until the mixer has stopped. Keep hands out of the way of all moving parts.

**● DON'T OVERREACH**

Floor must not be slippery. Keep proper footing and balance at all times. Never stand on mixer. Serious injury could occur if the mixer is tipped or if the moving parts are unintentionally contacted. Do not store anything above or near the mixer where anyone might stand on the mixer to reach them.

**● NEVER LEAVE MIXER RUNNING UNATTENDED**

Don't leave mixer until it has come to a complete stop.

**● DISCONNECT POWER**

Unplug when not in use, before making adjustments, changing parts, cleaning, or working on the mixer. Consult technical manual before servicing.

**● PROTECT THE ENVIRONMENT**

Take left over materials to an authorized collection point or follow the stipulations in the country where the mixer is used. Do not discharge into drains, soil or water.

**● MAINTAIN YOUR MIXER WITH CARE**

Clean the mixer immediately after use. Keep the mixer clean for best and safest performance.

**● MAKE THE WORKSHOP CHILDPROOF**

Lock the shop. Disconnect master switches. Store the mixer away from children and others not qualified to use it.

**TABLE OF CONTENTS**

Safety Warnings & Cautions ..... 1

Specifications ..... 2

Contents of Shipping Container ..... 3

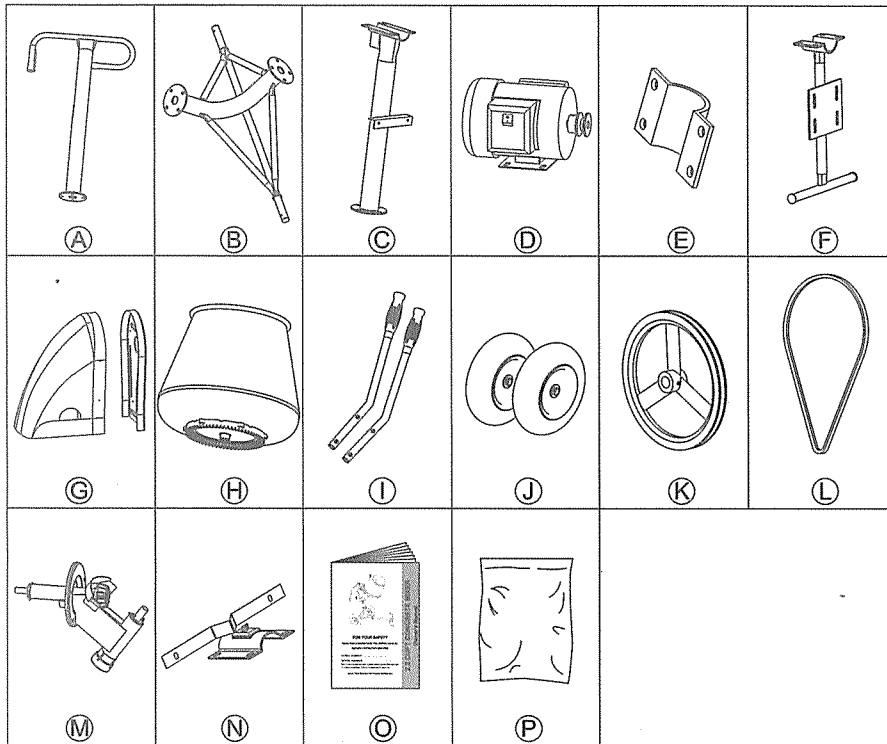
Set up and Preparation for Operation ..... 4

Parts Schematic ..... 6

**SPECIFICATIONS**

<b>Motor</b>		3/5HP (450 W)
<b>Capacity</b>	<b>Gross Drum Volume</b>	110 Litres ( 4 CUFT )
	<b>Unmixed Dry</b>	85 Litres ( 3 CUFT)
	<b>Mixed Wet</b>	60 Litres ( 2.2CUFT)
<b>Drum Mouth</b>		400mm (16")
<b>Weight</b>		64 Kgs

## CONTENTS OF THE SHIPPING CONTAINER



A	Main Frame I	1 pc
B	Main Frame II	1 pc
C	Main Frame III	1 pc
D	Motor with Drive Pulley	1 set
E	Motor Mount Cover	1 pc
F	Motor Mount	1 pc
G	Motor Housing	1 set
H	Drum	1 pc
I	Tilting Handles	1 pair
J	Wheel	1 pair
K	Idle Pulley	1 pc
L	Belt	1 pc
M	V Shape Bracket	1 pc
N	Mounting Cover	1 pc
O	Owner's Manual	1 pc
P	Loose Part Bag	1 pc

(Containing the following Items):

Tapcon Screw	ST4X10	4 pcs
Hex. Screw	M6X16	4 pcs
Hex. Screw	M8X20	4 pcs
Hex. Screw	M10X25	16 pcs
Hex. Screw	M10X40	4 pcs
Hex. Nut	M6	4 pcs
Hex. Nut	M8	4 pcs
Hex. Nut	M10	16 pcs
Lock Nut	M10	4 pcs
Flat Washer	ø6	4 pcs
Flat Washer	ø8	4 pcs
Flat Washer	ø10	20 pcs
Flat Washer	ø25	2 pc
Cotter Pin	ø5X40	2 pc
Hex. L-key	4mm	1 pc

## SET UP AND PREPARATION FOR OPERATION

